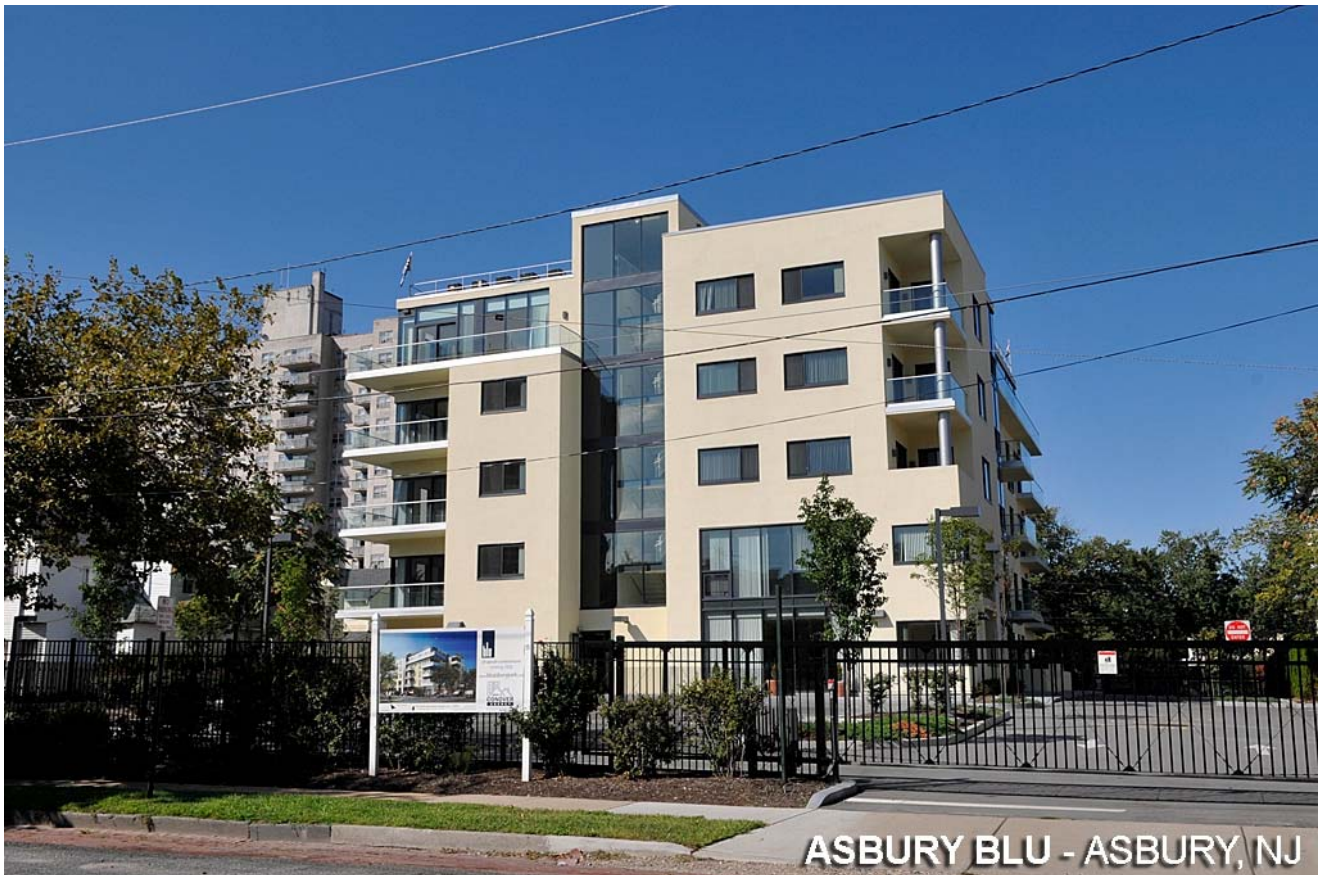


# Asbury Blu

Asbury Park, NJ



**TYPE OF PROJECT:** Residential  
**SIZE:** 5-story, 24 units  
**CLIENT:** The Schultz Organization  
**SERVICES PROVIDED:** Engineering, Planning, Landscape Architecture



## DESCRIPTION:

This project was designed in connection with the Asbury Grand development that is located on the same city block. Once an abandoned parking lot, this project represents an appropriate transition between the city's aggressive re-development district and the well established adjacent residential area.